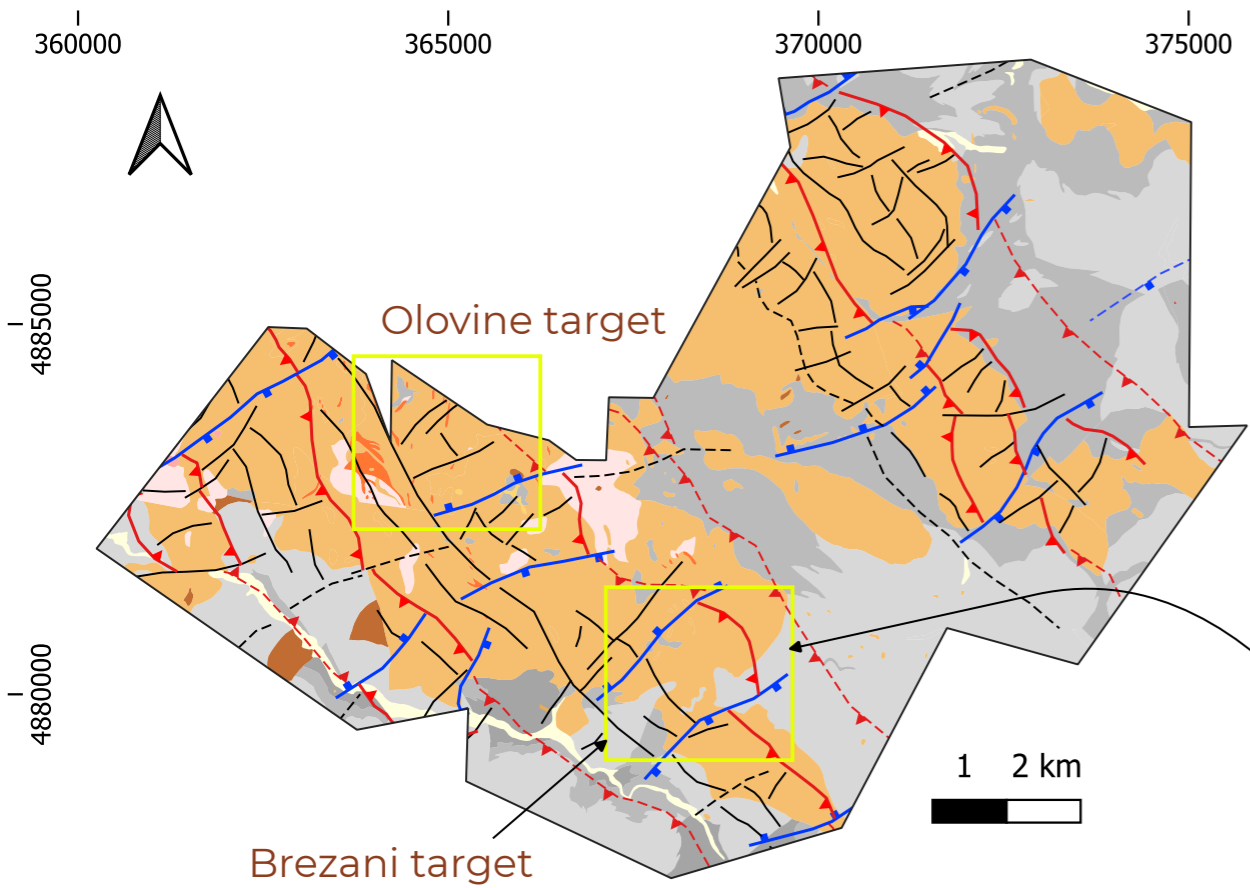
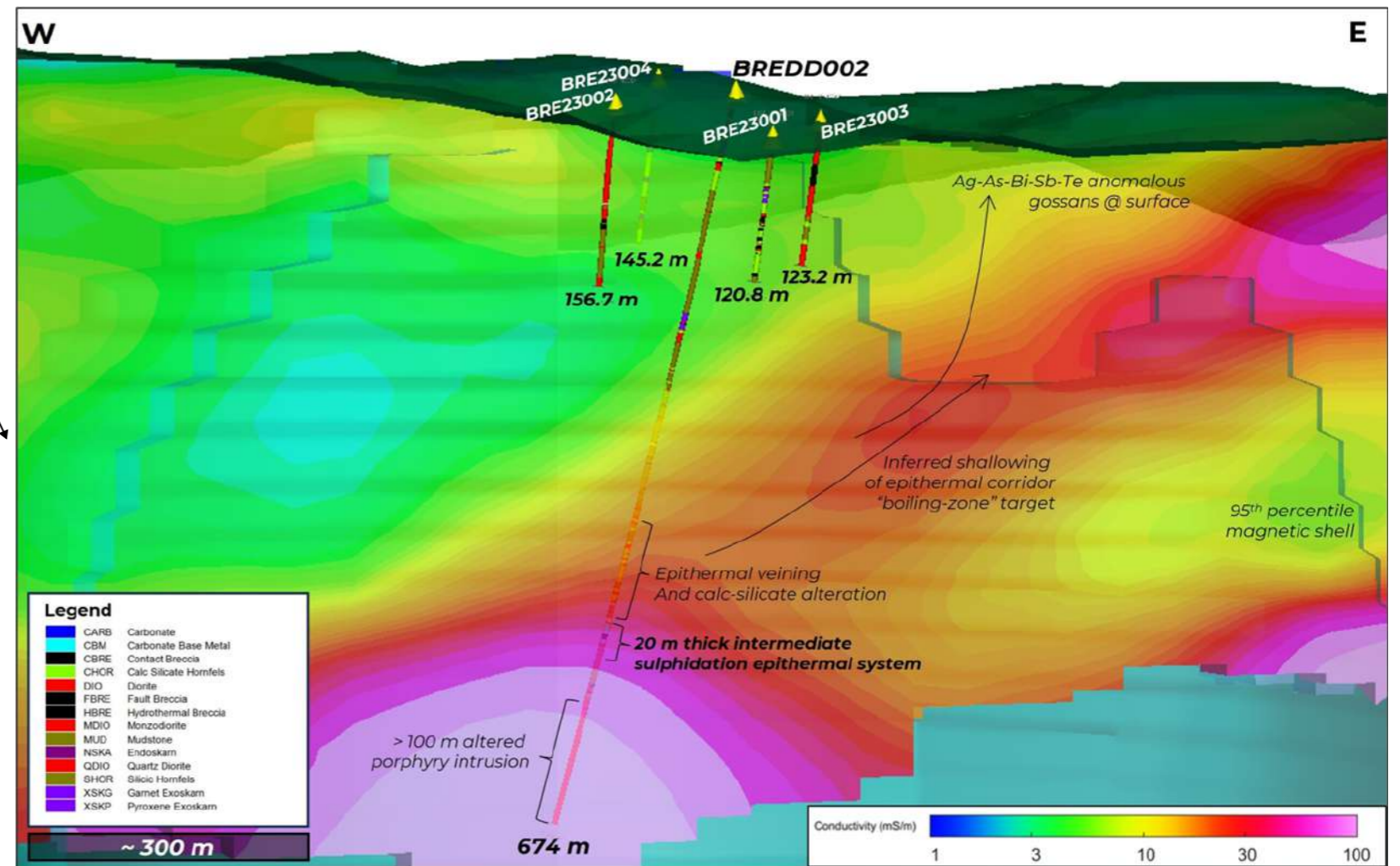


The Olovine License

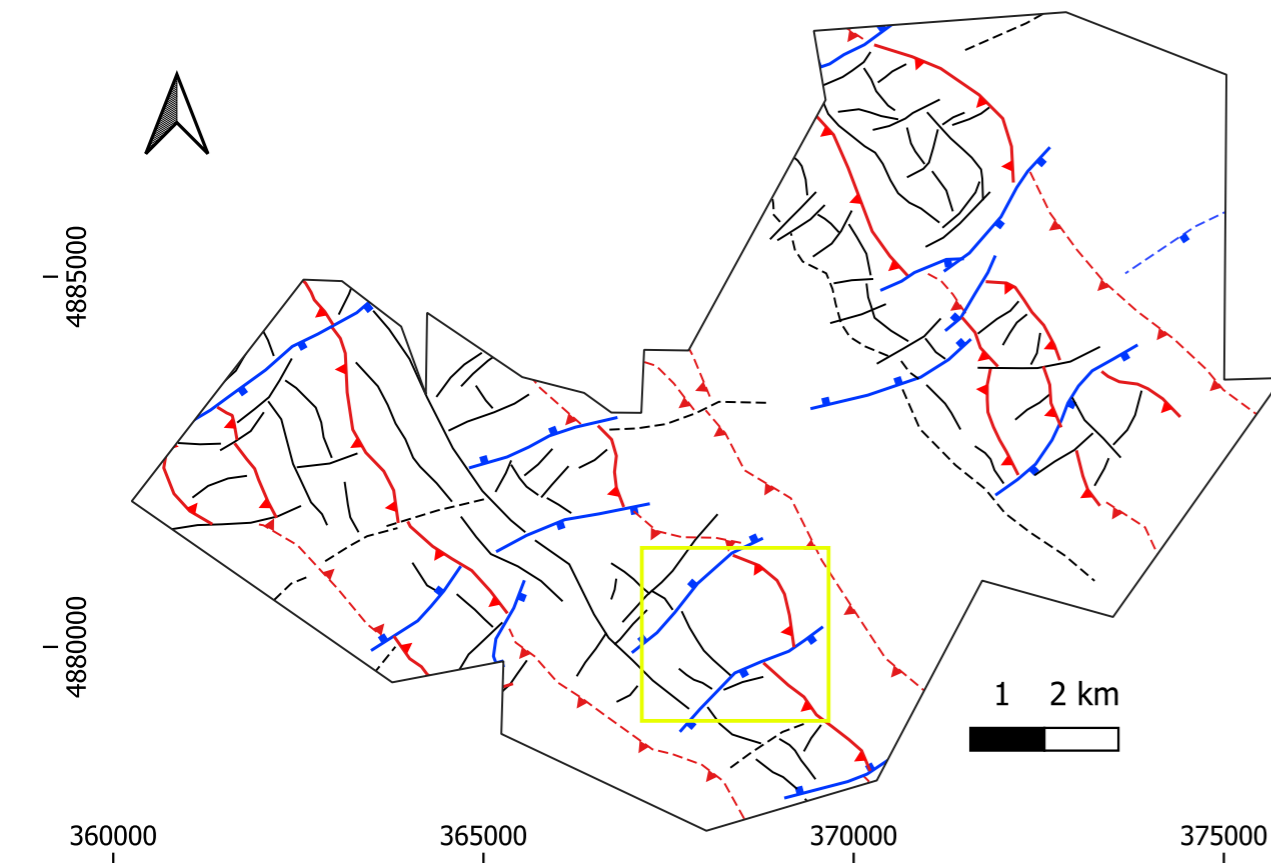


- | | | | | | |
|---------|----------------------------|---|-----------------------------|---|-----------------------------------------|
| ---- | Fault, inferred | — | Fault, inferred (2nd order) | □ | Tuff, Tuffite and Pyroclastite (Ot) |
| - - - - | Normal fault, inferred | □ | Quaternary Sediments (Qsd) | □ | Upper Carboniferous Metamorphics (Ucm) |
| -▲-▲- | Reverse fault, inferred | ■ | Andesite (Oad) | □ | Middle Carboniferous Metamorphics (Mcm) |
| — | Fault, interpreted | ■ | Dacite (Odc) | □ | Lower Carboniferous Metamorphics (Lcm) |
| -▲-▲- | Normal fault, interpreted | ■ | Quartz latite (Oql) | □ | |
| -▲-▲- | Reverse fault, interpreted | ■ | Silicified breccia (Osb) | | |

Drillhole Section



Reduced to Pole Magnetics



Technical Notes

Porphyry intrusives within Carboniferous Basement

Gold bearing calc-silicates observed over 700 m strike length

Discrete magnetic anomalies representing porphyry intrusives

88.0 m at 0.61 g/t AuEq from surface in 2022 drilling

